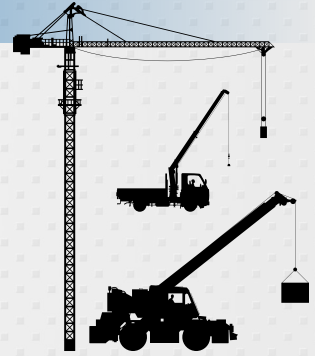


Mobile Telescopic Rough Terrain Crane

A wireless system with a unique electronically controlled auto-tilt camera that always points down. The tilting angle can be remotely adjusted back and forth to optimize view. It comes equipped with a stable wireless connection. Operated through a multifunctional wireless foot pedal and/or remote control. For cranes with powerless boom tips, a battery pack can be supplied. A universal mounting kit is also available.



Advantages auto-tilt camera system at Luffing, crawler, mobile and rough terrain cranes:

- The camera has high wind tolerance
- The camera has flexible mounting, reducing damage due to poor placement
- The camera can change viewing angles, guaranteeing optimal views

Special Solutions

If you have a special request for a custom built system or a viewing problem where the standard products don't apply, please feel free to contact us. Our specialists will be happy to work with you to develop a unique solution.

Need to expand your standard system? Need to add a winch or rearview camera? Our industrial compact color cameras come in many different viewing angles. Together with our switchers and multi view boxes, a solution can be created to solve your viewing problems. Contact our specialists to help with a design.

BCS

BOS CAMERA SYSTEMS

SEEING IS BELIEVING

Contact Info

BCS

E-mail: info@cranecamera.eu

Internet: www.cranecamera.eu

Dealer Info





BCS

BOS CAMERA SYSTEMS

SEEING IS BELIEVING

Welcome

BCS (Bos Camera Systems) specializes in camera systems for port, bulk-handling, industrial and building & construction cranes. Our extensive experience and crane knowledge assure a good solution that increases production and safety at your location or job-site.

BCS develops and manufactures all products in our own facility under strict criteria. This enables us to be swift, efficient and flexible enough to meet the demand of new applications and market developments.

Our philosophy is to develop and produce the components and systems as robust, simple and straightforward as possible. This results in reliability and one of the best products in the market with an excellent price/quality ratio.

Of course, at BCS we have a strong belief in our products and therefore we offer a 2-year product warranty.

Why BCS?

With our industry knowledge we understand your problems as if they were our own.

We value your opinion and feedback; believe in a personal approach, excellent service and clear goals for a successful business relationship. We enjoy sharing the benefit of our products with you because our main goal is for you to "SEE."

"SEE" Benefits

Safety

Camera Systems add unparalleled safety. No more misunderstanding between the crane operator and signalman. No more blindspots on your equipment. No more blind lifts.

Efficiency

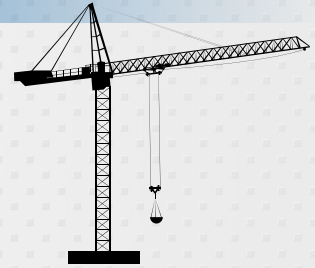
A camera system can increase the number of lifts up to 20%. By eliminating blind lifts, you are assured accurate positioning. Furthermore, you can expect less downtime due to fewer accidents.

Ergonomics

A crane operator without a camera system is constantly bending, turning and twisting to see his surroundings and working area. The camera system enables the crane driver to maintain the normal comfortable working position, which guarantees a less physically demanding work environment.

Flattop Tower Crane

A compact wireless system with very low power consumption. Runs only on a battery-pack and daylight solar panel. No additional charging devices necessary. Equipped with a very stable wireless connection and operated through a multifunctional wireless foot pedal and/or remote control. A universal mounting kit is also available.

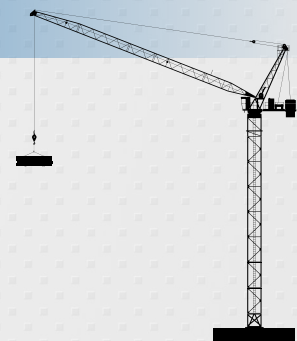


Advantages:

- The crane can run on the aggregate, no power necessary for charging the battery.
- The trolley can stay in any desired position after working hours
- Swift and simple mounting.

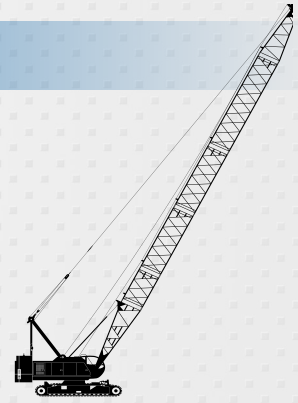
Luffing jib crane

A wired system with an unique electronically controlled auto-tilt camera that always points down. The tilting angle can be remotely adjusted to optimize view. It comes standard equipped with a cable reel and 75 meters cable. Operated through a multifunctional wireless foot pedal and/or remote control. A universal mounting kit is also available.



Crawler crane

A wired system with an unique electronically controlled auto-tilt camera that always points down. The tilting angle can be remotely adjusted to optimize view. It comes standard equipped with a cable reel with a choice of 100, 150 or 200 meters cable installed. Operated through a multifunctional wireless foot pedal and/or remote control. A universal mounting kit is also available.



Mobile telescopic crane

A wireless system with an unique electronically controlled auto-tilt camera that always points down. The tilting angle can be remotely adjusted back and forth to optimize view. It comes equipped with a stable wireless connection. Operated through a multifunctional wireless foot pedal and/or remote control. A universal mounting kit is also available.

